

Setting up PPPoE Connection Connecta Wireless

Welcome to Connecta

This guide will help you understand how to set up PPPoE Connection on your computer.

0800 969 869 | .net.nz

 **Connecta**
Your rural broadband

Please print or save a copy of this guide on your computer for future reference, so you have it handy if you need to call us.

Our specialist wireless team are available Monday to Friday 9:00am - 5:30pm on 0800 969 869. If you contact us outside of these hours you will be directed to our customer care team. Alternatively, you can leave us a message and we'll get back to you during the next business day.

0800 969 869 | .net.nz



Identifying Your Wireless Equipment

If you would like a set of labels to help you identify your indoor equipment, please email us at info@connecta.co.nz with your name and account number and we'll get these out to you.

Indoor Unit (IDU)



This Black/White unit powers the dish on your roof. It will have three cables - a black cable running up to the dish, a power cable and an Ethernet cable running to your PC or Phone Adaptor (if you have a phone connection).

Please Note: Make sure that your Ethernet cable is detected to your PC (you would get small pop up on left bottom of your screen)

0800 969 869 | .net.nz


Your rural broadband

How to setup PPPoE Connection?

For Windows Operating System?

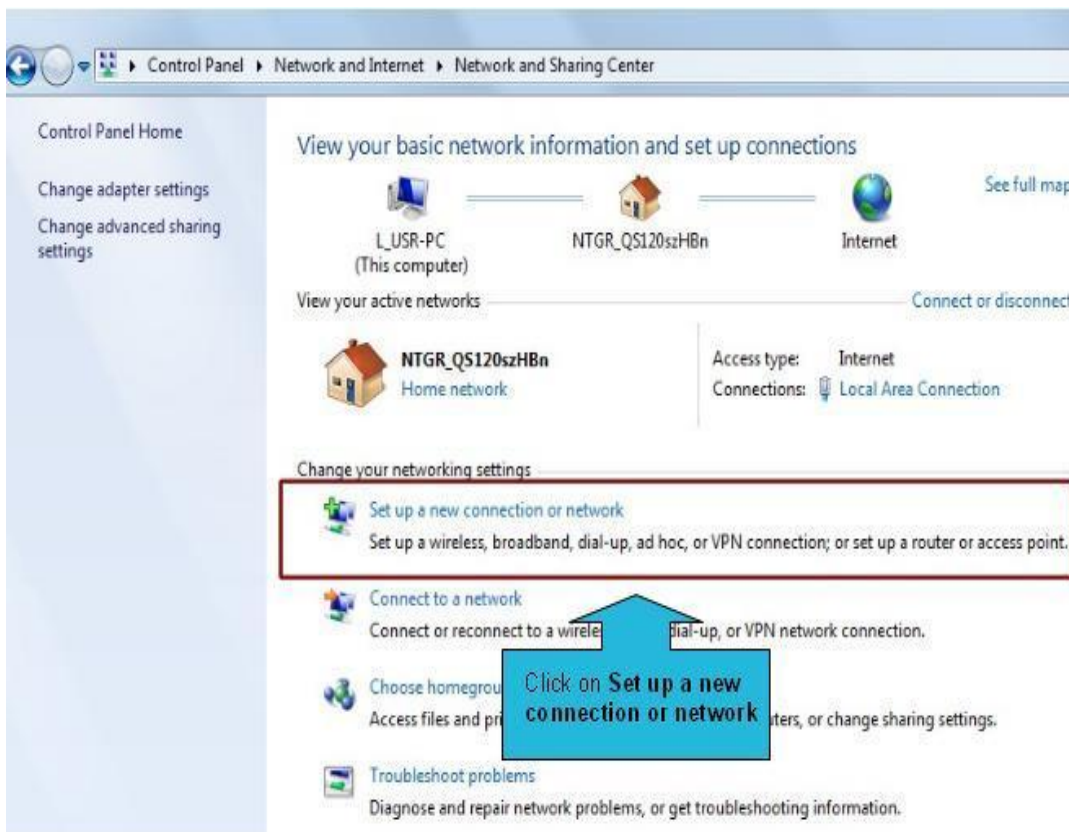
Please Note:

We know that there are different versions of Windows operating system that's available, however similar setup procedure is followed from Windows 7 and above, only difference may be how to get to Network and Internet. But afterwards its same steps.

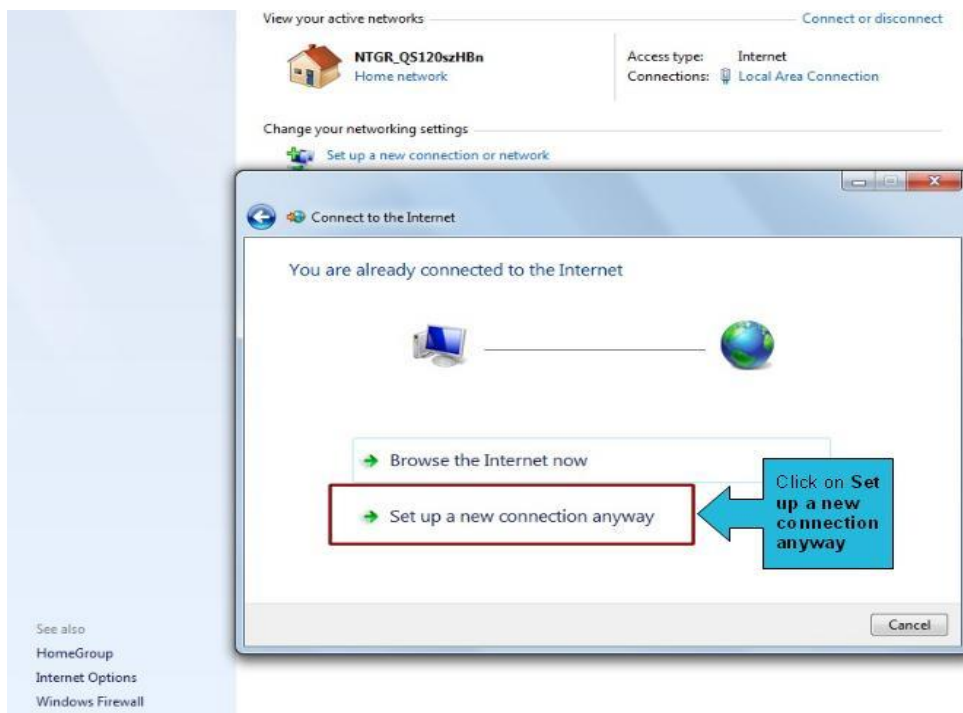
STEP 1. Click on **Start** button and then, **Control Panel**.

STEP 2. Go to **Network and Sharing Center**.

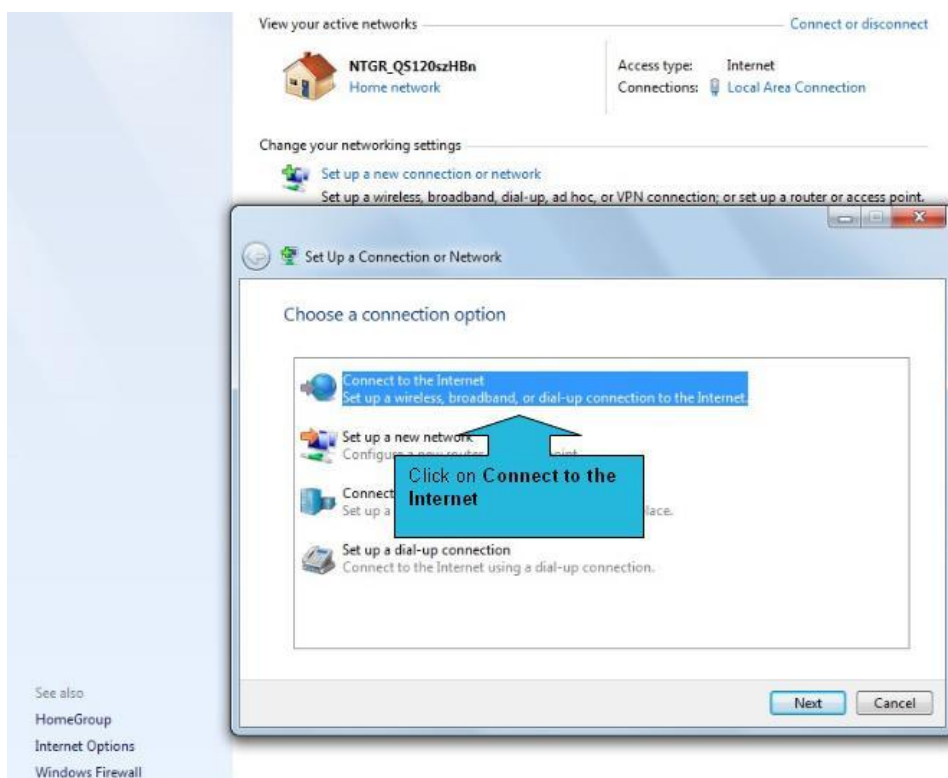
STEP 3. Select on **Set up a new connection or network**.



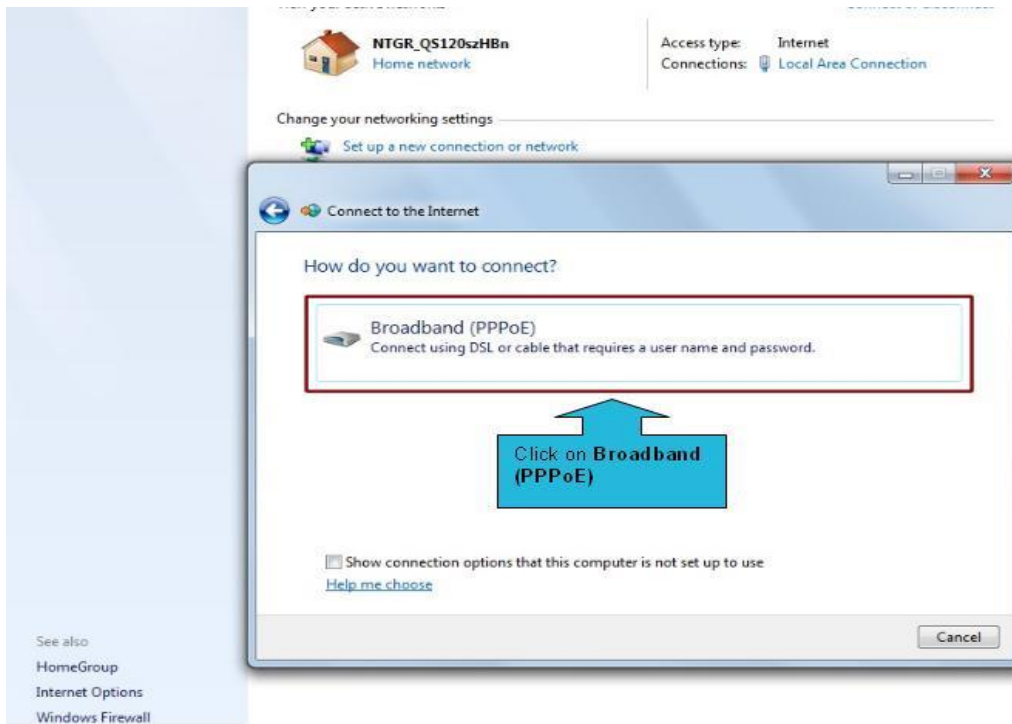
STEP 4. A wizard will appear on the screen. Choose **Connect to the Internet**



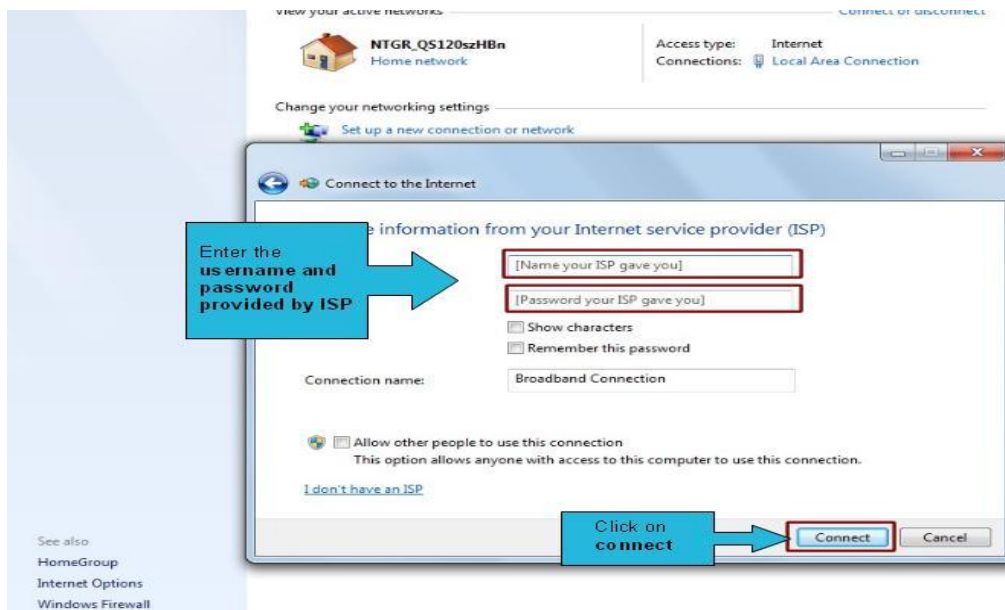
STEP 5. Select **Set up a new connection anyway**.



STEP 6. Select Broadband (PPPoE).



STEP 7. Enter the username and password given by your ISP and then, click on Connect
Call 0800 969 869 for your internet login username & password

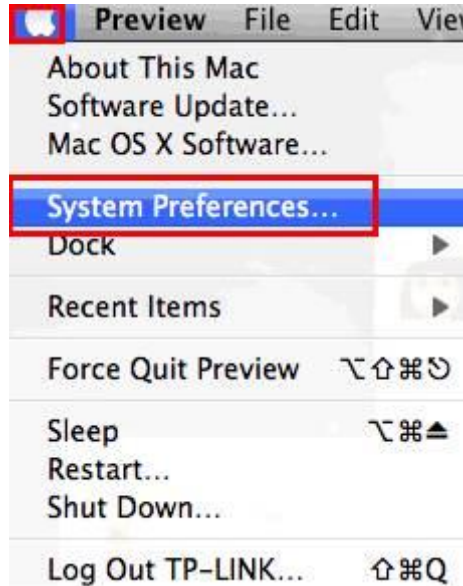


Please note that you have to; Select > Remember the password
Select > Show characters

For Mac Operating System?

Step 1

Click the Apple menu then select System Preferences.



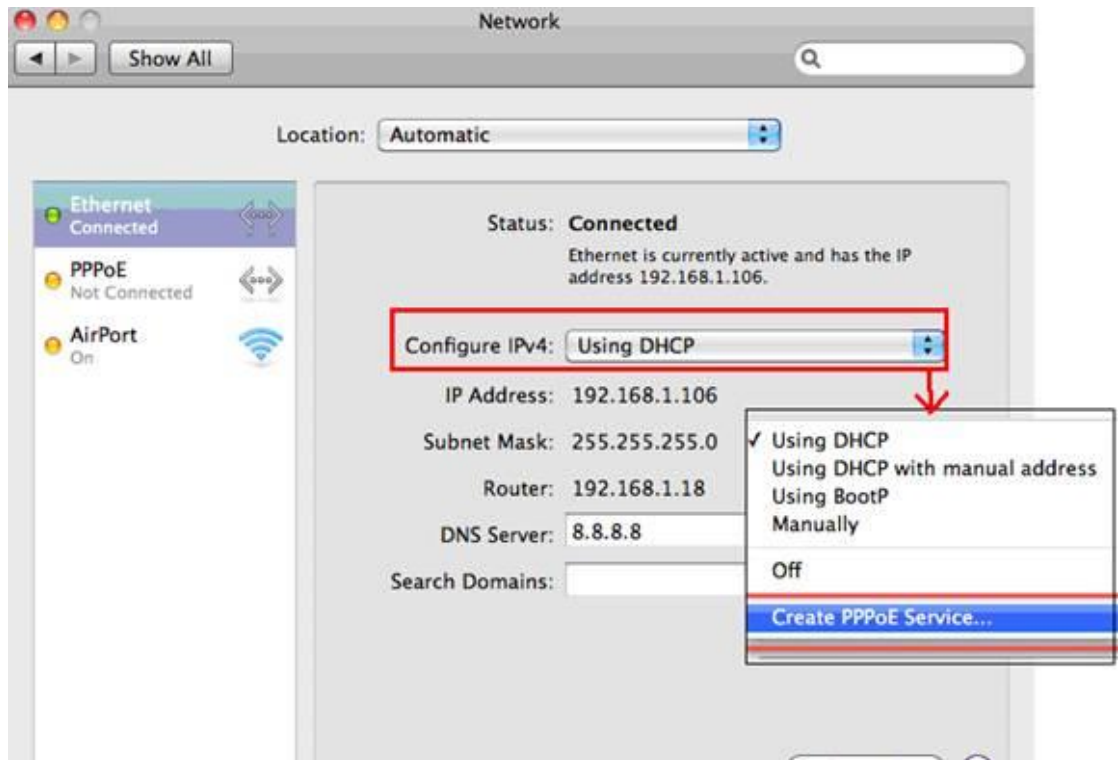
Step 2

When the System Preferences screen appears, please go to the Internet & Wireless section and click Network.



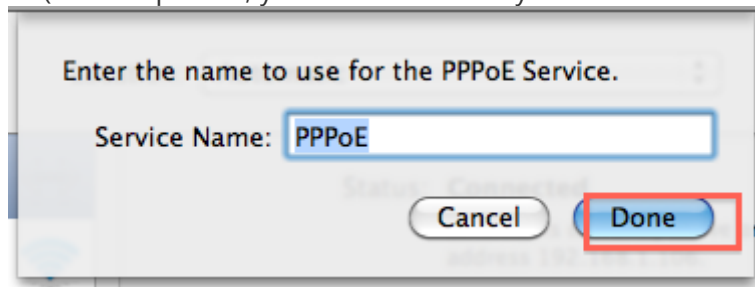
Step 3

Under the Network screen, please select Ethernet. In the Configure IPv4 box, please select Create PPPoE Service.



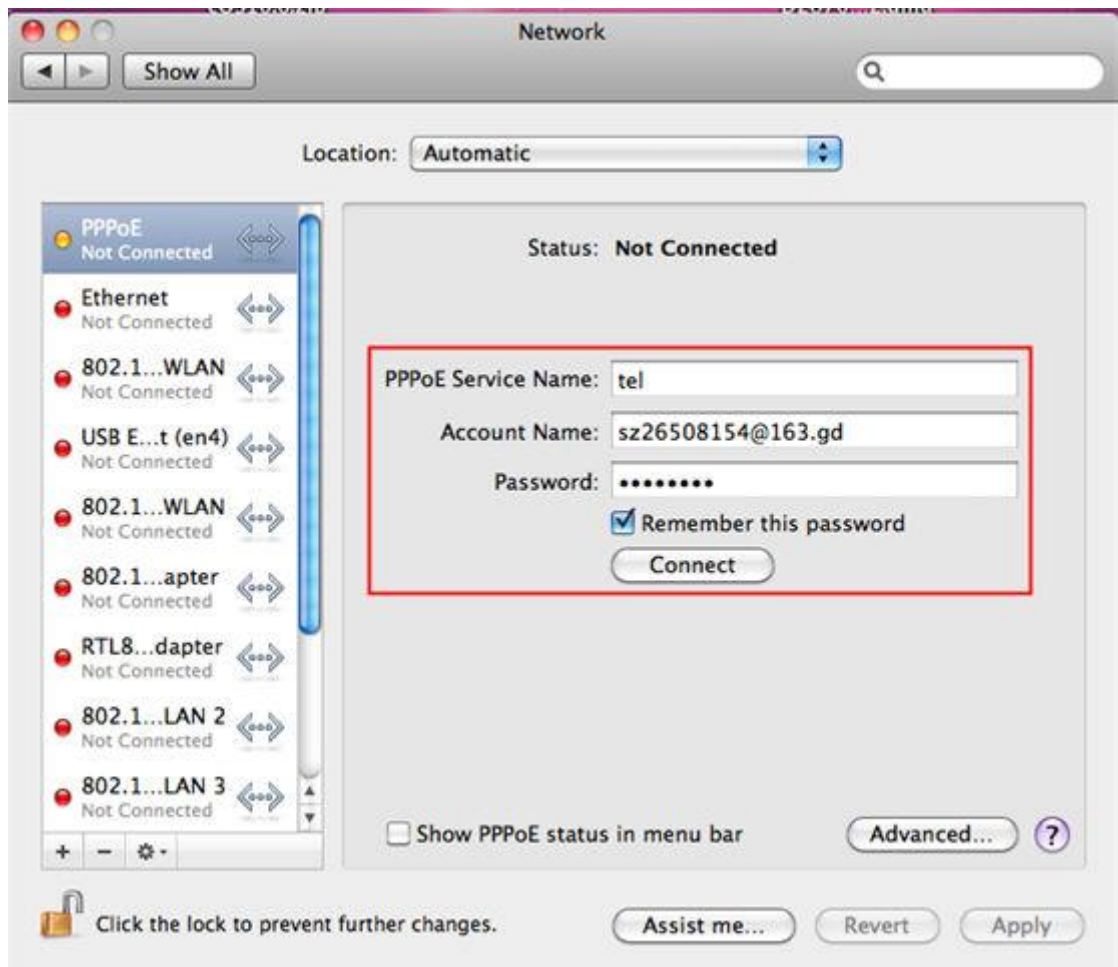
Step 4:

Please type the Service Name (This is optional, you should contact your ISP to confirm) and click Done.

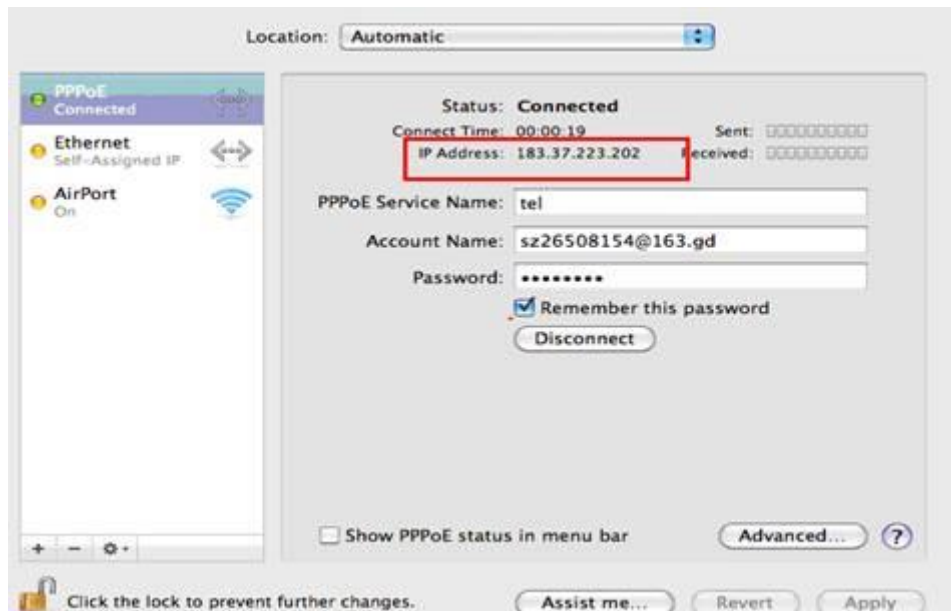


Step 5:

Type the username and the password which are from your ISP, and then please click on Apply and Connect



If it is successful, you will see the IP address which is shown as below:



0800 969 869 | .net.nz